



# Fall 2024

## Saline Community Education

# Programs



*Registration opens July 31 at 7:00 am!*  
[salineonline.reg.eleyo.com](https://salineonline.reg.eleyo.com)

# What is Community Education?

Community Education is the educational philosophy that underlies community schools, and advocates the creation of opportunities for community members - individuals, schools, businesses and public and private organizations - to become partners in addressing community needs. Community Education is most easily recognized in the community school, a facility that is open beyond the traditional school day for the purpose of providing academic, recreation, health, social service, and work preparation programs for people of all ages.

## Mission Statement

The mission of Saline Community Education is to deliver community education services of the highest quality to the Saline Area School District.

## Information

CHECKredi Process for Collection of Returned Checks - Saline Area Schools collects payments from families and the community in a variety of ways, one of which is payment by check. We recognize that occasionally a parent or community member may inadvertently overdraw a checking account and a check may be returned by your bank. In order to recover these funds in a private and professional manner, we have contracted with CHECKredi, LLC, a company based in Lexington, Kentucky, for collection of returned checks. When a check is written and made payable to the district, the person writing the check agrees that, if the check is returned that it may be represented electronically on the same account, and that the fee established by law, now \$25.00 in addition to the face value, may be debited from the same account. If not collected within the initial 7 days the fee will increase to \$35.00. (Please note that all checks should include name, address and telephone number.) CHECKredi will contact you by mail and by telephone in order to make arrangements to pay before attempting to represent the check electronically. Payments may be made to CHECKredi's office by mail to P.O. Box 11848, Lexington, KY 40578. Payments of the check and fee may also be made online at [www.checkredi.com](http://www.checkredi.com) using a credit card, debit card or electronic check without any additional fees. For a convenience fee, payments may be made over the telephone at (800) 239-1222 by credit card, debit card or electronic check.

Mailing List - Sign up to receive upcoming program and event information from Saline Community Education. Visit [www.salinecommunityed.com](http://www.salinecommunityed.com) to sign up.

Photo Policy - On occasion, the Saline Community Education Department may take photos of participants enrolled in sponsored programs. Please be aware that these photos are for our department use only and may be used in future brochures, flyers or display.

Saline Area Schools, in compliance with federal, state and county Child Find policies, is a resource to resident families with children who have or are suspected of having a disability. Please contact Brian Puffer at 734-401-4021, or the Instructional Services Department at 734-401-4002.

### Thank You

to our sponsors  
Saline District Library  
Saline Lectronics  
Busch's Fresh Food Market  
McNaughton Family  
Faurecia  
Roofman  
Dan's Downtown Tavern

### Saline Parks and Rec

offers a wide variety of adult and youth classes, leagues, and special events. For more information, call 734-429-3502.

### Saline Area Senior Center

is a social center for people aged 45 and up!  
See page 27 for a summary of current offerings.  
734-429-9274

## Non-Discrimination Policy of Saline Area Schools

No person shall be excluded from participation in, be denied the benefits of, or be subjected to discrimination in any educational program or activity available in any school on the basis of race, color, sex, religion, creed, political belief, age, national origin, linguistic and language differences, sexual orientation, socioeconomic status, height, weight, marital or familial status, or disability.

## Table of Contents

Building Map & Staff Directory ..	3
Welcome and SAS Compass ....	4
Adult Enrichment .....	5-7
Adult Recreation .....	8-9
High School Enrichment .....	10
Youth Music & Arts .....	11-13
Youth Enrichment .....	14-16
Youth Recreation .....	17-25
Facilities Rentals .....	26
Saline Area Senior Center .....	27
Pooh Corner/GSRP .....	28-29
Before & After School Care .....	30
Registration Information .....	31
Craft Show .....	32



Saline Community Education



@SalineCommEd



@salinecommunityed

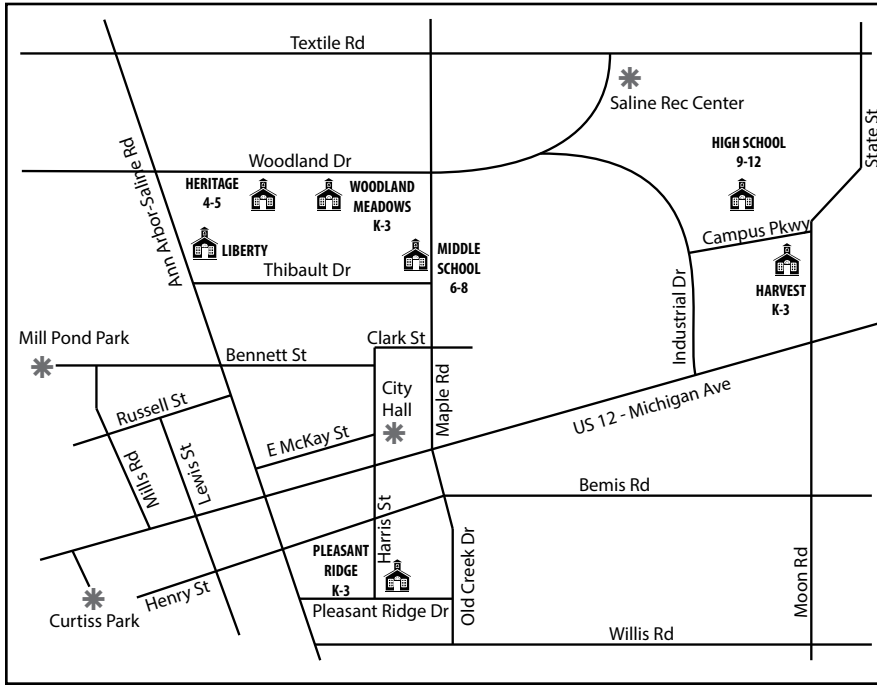
### Saline Community Education

7265 N Ann Arbor Street  
Saline, MI 48176  
(Located in Liberty School)

Phone: 734-401-4020  
Fax: 734-401-4094



# Saline Community Education



## Building Locations (Building Codes)

**HARVEST ELEMENTARY (HV)**  
1155 Campus Pkwy, Saline MI 48176  
734-401-4500

**HERITAGE ELEMENTARY (HR)**  
290 Woodland Dr, Saline MI 48176  
734-401-4100

**HIGH SCHOOL (HS)**  
1300 Campus Pkwy, Saline MI 48176  
734-401-4200

**LIBERTY SCHOOL (LB)**  
7265 N Ann Arbor St, Saline MI 48176  
734-401-4000

**MIDDLE SCHOOL (MS)**  
7190 N Maple, Saline MI 48176  
734-401-4600

**PLEASANT RIDGE (PR)**  
229 Pleasant Ridge Dr, Saline MI 48176  
734-401-4800

**WOODLAND MEADOWS (WM)**  
350 Woodland Dr, Saline MI 48176  
734-401-4900

## Saline Community Education Staff Directory

**COMMUNITY EDUCATION DIRECTOR**  
Brian Puffer 401-4021  
pufferb@salineschools.org

**ADMINISTRATIVE SPECIALIST**  
Sharon Dunny 401-4022  
dunnys@salineschools.org

**DESIGN & ENRICHMENT PROGRAM SPECIALIST**  
Linda Davis 401-4028  
davisli@salineschools.org

**FACILITIES SPECIALIST**  
Jeff Burman 401-4024  
burmanj@salineschools.org

**BEFORE & AFTER SCHOOL CARE PROGRAM SPECIALIST**  
Lee Saborio 401-4031  
saboriol@salineschools.org

Assistant: Linda Davis 401-4028  
davisli@salineschools.org

**BEFORE & AFTER SCHOOL CARE BUILDING DIRECTORY**  
Harvest: 401-4529  
Heritage: 401-4031  
Pleasant Ridge: 401-4830  
Woodland Meadows: 401-4936

**MS ATHLETICS AND COMMUNITY EDUCATION PROGRAM SPECIALIST**  
Ashlee Howes 401-4023  
howesa@salineschools.org

**AQUATICS PROGRAM SPECIALIST**  
Sandy Stafford 401-4369  
staffors@salineschools.org

**CULTURAL ARTS PROGRAM SPECIALIST**  
Rebecca L. Groeb 401-4214  
groebr@salineschools.org

**POOH CORNER DIRECTOR**  
Su-Fen Lin 401-4062  
lins@salineschools.org

Assistant: Stacy Turck 401-4063  
turcks@salineschools.org



# Welcome



## A Message from the Superintendent

### Saline Area Schools Community Education Program: A Hub of Lifelong Learning

Community Education is a vital extension of the traditional school system, designed to provide academic, recreational, health, social, and work-based programs for individuals of all ages. Our mission is to foster a love of learning that extends beyond the conventional classroom and school day.

### Our Philosophy

At Saline Area Schools, we believe that education is a lifelong journey. Our Community Education programs are crafted to offer everyone, regardless of age or interest, opportunities for personal growth and fulfillment. Whether you are looking to acquire new skills, engage in a hobby, improve your health, or simply enjoy recreational activities, we have something for you. Our programs are accessible to residents within our district and also to those from neighboring communities.



### Join Us and Thrive

Saline Area Schools is dedicated to the relentless pursuit of excellence, as we strive to meet the needs and exceed the expectations of our families and community. We invite you to explore our diverse range of programs and take the first step towards new experiences and knowledge. By participating in our programs, you embrace the philosophy that learning is a continuous, life-enriching process. Remember, "Never stop learning, because life never stops teaching."

Discover the opportunities that await you at Saline Area Schools. Sign up for a program today and be part of a community that values education at every stage of life.

Stephen D. Laatsch, Ph.D.  
Superintendent, Saline Area Schools

## SAS Compass

## Saline Area Schools Board of Education and Administration



The 4 Cs consist of communication, collaboration, creativity and critical thinking. The dark blue compass points identify 4 primary skills that we want all of our Saline Area Schools' students to demonstrate proficiency in by the time they graduate.

Saline Community Education is committed to the Saline Area Schools 4 Cs mission. Our youth classes promote 4 Cs skills that can be enhanced through participation in a program.

**BOARD OF EDUCATION**  
Michael McVey, Board President  
Jennifer Steben, Vice President  
Jenny Miller, Secretary  
Brad Gerbe, Treasurer  
Tim Austin, Trustee  
Susan Estep, Trustee  
Lauren Gold, Trustee

Carol Diglio  
Assistant Superintendent of  
Human Resources

Miranda Owsley  
Assistant Superintendent of Finance



# Adult Enrichment

## How to Play Piano by Ear

Learn one of music's deepest mysteries: How to play songs without relying on music. A very practical presentation of music theory that includes predicting chord progressions, learning from recordings, and transposing - all expressed in everyday language. This is an ideal follow-up to the "Instant Piano" class and is open to anyone who has a basic understanding of chords on any instrument. Expand your musical horizons, free yourself from sheet-music dependence, and be the life of the party! Prior experience with chords recommended. Fee includes the online book, online follow-up lessons, a recording of the class and an optional monthly question and answer session. Class is held online using zoom.

Instructor: Craig Coffman

ID	AGE	DAY	TIME	DATE	LOCATION	FEE
1025-F24A	18+	Sa	9-11:30 am	11/23	Virtual	\$82

## Getting Paid to Talk: An Introduction to Professional Voice Over

If you've ever wondered how to begin in voice over part time, full time, or for supplemental or retirement income, this workshop is a great, upbeat and, most importantly, realistic first step. Our easy-to-access remote learning system will take you behind the scenes at Voice Coaches main studios, where we regularly produce voice over content for clients including Netflix, Discovery, HGTV, Disney, Lifetime, Nickelodeon, and many more. From audio books, training material, animation, and commercials to socially relevant content, television, and much, much more: today's voice over field has become a great way to leverage your individual voice qualities and communication skills in a whole new way. This class also includes an opportunity to receive a brief one-on-one voice range and quality assessment with our instructor. We sincerely hope you'll join our community of enthusiastic learners! This class is fun, realistic, and a great first step for anyone interested in voice over. Instructor: Voice Coaches

ID	AGE	DAY	TIME	DATE	LOCATION	FEE
1061-F24A	18+	Th	6:30-8 pm	10/10	Virtual	\$38



## Instant Piano for Hopelessly Busy People

In just a few hours you can learn enough secrets of the trade to give you years of musical enjoyment. Learn to play piano the way professionals do - using chords. Since this class is being held online with Zoom you will be able to sit at your piano or keyboard at home and take this course with no pressure at all. This course includes an online book and online follow up video lessons so you will be able to continue your practice and study on your own. An optional periodic online question and answer session is also included. A recording of the class is included as well. The course is partly lecture/demonstration and partly hands on instruction. Topics include:



- How chords work in a song
- How to get more out of sheet music by reading less of it
- How to form the three main types of chords
- How to handle different keys and time signatures
- How to avoid "counting"
- How to simplify over 12,000 complex chords

Instructor: Craig Coffman

ID	AGE	DAY	TIME	DATE	LOCATION	FEE
1018-F24A	18+	Sa	9 am-12 pm	11/2	Virtual	\$82

## Instant Guitar for Hopelessly Busy People

Have you ever wanted to learn the guitar but simply find it difficult to find the time? In just a few hours you can learn enough about playing the guitar to give you years of musical enjoyment, and you won't have to take private lessons to do it. This crash course will teach you some basic chords and get you playing along with your favorite songs right away. Since this class is being held online with Zoom, you will be able to sit at home with your guitar and take this class without any pressure at all. The class includes an online book and online follow-up video lessons, so you will be able to continue your practice and study on your own. An optional periodic online question and answer session is also included. A recording of the class is included as well. For ages 13+. Topics Include:

- How chords work in a song
- How to form the three main types of chords
- How to tune your guitar
- Basic strumming patterns
- How to buy a good guitar (things to avoid)
- How to play along with simple tunes

Instructor: Craig Coffman

ID	AGE	DAY	TIME	DATE	LOCATION	FEE
1019-F24A	13+	Sa	1-3:30 pm	11/2	Virtual	\$82

# Adult Enrichment



## Beginner/Intermediate Adult Watercolor Class

This ongoing class is for beginner and intermediate painters. We will learn about materials, color mixing, values and layering. If you've had some experience with watercolors, we explore a variety of wet and dry brush techniques through demonstrations and hands-on teaching. Subject matter includes landscapes, wildlife, flowers, etc.



Material list will be provided. Paper Fee: \$7 (if needed)  
Instructor: Keith McGuire

ID	AGE	DAY	TIME	DATE	LOCATION	FEE
1020-F24A	18+	Th	10 am-1 pm	9/5-9/26	LB 33	\$96
1020-F24B	18+	Th	10 am-1 pm	10/3-10/31	LB 33	\$120
1020-F24C	18+	Th	10 am-1 pm	11/7-11/21	LB 33	\$72
1020-F24D	18+	Th	10 am-1 pm	12/5-12/19	LB 33	\$72

## The Naturalist's Sketchbook

Join wildlife artist Keith McGuire as we explore nature using various art materials (watercolors, nib pens, pastels, colored pencils and charcoal). Using careful observation of the nature that surrounds us we will create a journal of art inspired by nature. Students will be illustrating plants, insects, bones, feathers, fossils, shells, even microscopic subjects! Art supplies will be provided, however you can bring your own. Journal will be provided. Start a journey that could last a lifetime. Instructor: Keith McGuire

ID	AGE	DAY	TIME	DATE	LOCATION	FEE
1048-F24A	18+	W	6-8 pm	10/16-11/20	LB 33	\$185



## Community Watercolor Class with Valerie Mann

Continuing in the tradition of building community through watercolor, Valerie Mann is the instructor for what was Watercolors With Taylor Jacobsen. Mann continues with a welcoming atmosphere for beginning and experienced painters along with individualized instruction and demos. She will cover basic and advanced techniques in transparent watercolor. Beginners will get specific exercises to practice techniques. Students should bring an array of reference photos. This class is an opportunity to work on and talk about painting with other artists. We paint in a large room with plenty of space to spread out. Instructor: Valerie Mann

ID	AGE	DAY	TIME	DATES	LOCATION	FEE
1021-F24A	18+	Th	6:30-9 pm	9/12, 9/19, 10/17, 10/24, 11/14, 11/21	Senior Center	\$60

## Raising a Financially Literate Family

Families come in all shapes and sizes. From allowance guidelines to first credit cards and everything in between, learn ways to incorporate financial education early in a child's life and/or throughout a teen's life to help them make smart money management choices. Instructor: Colleen McNickle, Michigan Schools & Government Credit Union

ID	AGE	DAY	TIME	DATE	LOCATION	FEE
1039-F24A	18+	W	6-7 pm	9/11	Saline MSGCU	Free

## Start Selling on eBay

Have you been wondering whether selling on eBay would be a fun way to make extra cash, or whether you could even turn it into a home-based business? Jump-start your new venture with the help of this enthusiastic instructor who's been selling on eBay and other sites since 2004! You'll save a LOT of time by learning essential skills and how to avoid common rookie mistakes so you can start selling with confidence. Instructor: Peggy Lubahn

ID	AGE	DAY	TIME	DATE	LOCATION	FEE
1001-F24A	18+	Sa	12-4 pm	10/12	LB Boardrm	\$35





# Adult Enrichment

## Small Business Owner Exit Planning Round Tables Series

Come join Foresight Capital Management Advisors, Inc. and Certified Exit Planning Advisor (CEPA), Laurie S. Stegenga CPA, PFS, CFP®, AIF®, CEPA for an enriching series which covers how to successfully setup a succession plan and exit your business for maximum value upon retirement. This series will be offered in 3 segments on the second Monday of each month from September-November at 5pm via GoToMeeting. We highly encourage all small business owners to join this round table series to learn how to maximize the value of your business at the time of exit, minimize taxes, and ensure that you are able to accomplish all of your personal and financial goals in the process. Instructor: Laurie Stegenga

ID	AGE	DAY	TIME	DATE	LOCATION	FEE
1047-F24A	35-75	M	5-6 pm	9/9	Virtual	\$20
1047-F24B	35-75	M	5-6 pm	10/14	Virtual	\$20
1047-F24C	35-75	M	5-6 pm	11/11	Virtual	\$20

## The Importance of Financial Planning for All Millennials and Gen Z

Come learn how much to start saving for retirement as you launch your career and begin the important financial planning process. This class will focus on the holistic approach of financial planning for young professionals and the "balancing act" that's needed through student loan debt repayment, starting to budget for first time purchases such as a home or vehicle, and starting to save and investment for retirement. \*This class is pending certification approval from SHRM and NASBA\* Instructor: Laurie Stegenga

ID	AGE	DAY	TIME	DATE	LOCATION	FEE
1008-F24A	18-40	Tu	5:30-6:30 pm	9/10	Virtual	\$20
1008-F24B	18-40	W	6-7 pm	10/16	Virtual	\$20
1008-F24C	18-40	Tu	5-6 pm	11/12	Virtual	\$20

## A Retirement Portfolio That Lasts In All Market Conditions

Learn how to convert your 401(k) savings into a "Modern Day Pension" distribution portfolio. Please join us for an enlightening and informative evening where you will learn about this efficient way of managing your investments to preserve your funds and allow you to live off your interest and dividends for the rest of your life! \*This class is pending certification approval from SHRM and NASBA\*

Instructor: Laurie Stegenga

ID	AGE	DAY	TIME	DATE	LOCATION	FEE
1261-F24A	45-75	W	5:30-6:30 pm	9/11	Virtual	\$20
1261-F24B	18-40	Tu	6-7 pm	10/15	Virtual	\$20
1261-F24C	18-40	M	5-6 pm	11/18	Virtual	\$20



# Adult Recreation



## Functional Fitness

Do you live to exercise? Unless you're an elite athlete you probably answered "No." Most people exercise to improve their quality of life. That's the focus of Functional Fitness. The exercises executed in this class help train muscles to perform everyday activities safely and efficiently by targeting major muscle groups. Please bring a mat and hand weights (if you would like to use them) to class.

Instructor: Kathy Metta

ID	AGE	DAY	TIME	DATE	LOCATION	FEE
2004-SU24C	18+	Tu	4:30-5:15 pm	8/13-9/17	LB Band	\$90
2004-F24A	18+	Tu	4:30-5:15 pm	10/22-11/19	LB Band	\$85
2004-F24B	18+	Tu	4:30-5:15 pm	11/26-12/17	LB Band	\$68

## Choi Kwang Do Martial Art for Adults & CKD Black Belts

Choi Kwang Do is a dynamic, innovative approach to martial arts training. It is based on traditional martial arts philosophy that emphasizes the idea of personal development being paramount, rather than sports competition. Classes provide a friendly environment to help students grow in self-discipline and self-confidence. The techniques & concepts of this art can be considered very non-traditional. Principles of modern science, derived from psychology, plyometrics, kinesiology and bio-mechanics form the basis for Choi Kwang Do. It is designed to be a devastatingly effective self-defense system that can be used in real street situations. Choi Kwang Do has been designed to enhance the student's overall health, fitness and well-being rather than cause the injuries and damage that many competitive activities do. It is a dynamic art that continually evolves as new information on health, fitness and improved training methods are developed. NO SPARRING, "TAKE-DOWNS," JUMPING OR FALLING. This is a continuous program. Note: added fees apply if student wishes to test for advancement (see instructor).

Instructor: Master Stoddard

ID	AGE	DAY	TIME	DATE	LOCATION	FEE
2002-F24A	11+	Tu, Th	6:30-7:45 pm	9/10-10/24	LB 9 & 11	\$90
2002-F24B	11+	Tu, Th	6:30-7:45 pm	10/29-12/19*	LB 9 & 11	\$90

\*No class 11/5, 11/28

## Choi Kwang Do Martial Art Black Belt Class

This class is a specifically designed comprehensive format of all Black Belt Requirements. 1st Degree Black Belts through 6th Degree Black Belts will train in a fast-paced dynamic class to increase fast twitch muscles, endurance and agility, plus Black Belt syllabus.

THIS CLASS IS MANDATORY FOR ALL CKD STUDENTS- IL DAHN AND ABOVE- WHO ARE SERIOUS ABOUT TESTING FOR THE NEXT DAHN. Instructor: Master Stoddard

ID	AGE	DAY	TIME	DATE	LOCATION	FEE
2006-F24A	18+	Sa	11 am-12 pm	9/14-10/19	LB 11	\$20
2006-F24B	18+	Sa	11 am-12 pm	11/2-12/14*	LB 11	\$20

\*No class 11/30







# Adult Recreation

## Jishukan Chi

Jishukan Chi is the first class of its kind using the techniques of Jishukan Ryu Jujitsu without the rigors of contact associated with martial arts. Using their own body weight as resistance, students will stretch and strengthen muscles, ligaments and tendons. Using the rhythmic flow that is part of Jishukan Ryu, JuJitsu forms, students will improve their core strength, balance, flexibility, and concentration. Jishukan Chi allows students of ages 14+ to work at their own pace but is ideal for those over 40 that want body maintenance, rehabilitation, or stress relief without high intensity workouts. Students can enroll after the start date for a prorated fee by calling 734-401-4020. Session A is 15 weeks long, and session B is 14 weeks long. Instructor: Doc Ping

ID	AGE	DAY	TIME	DATE	LOCATION	FEE
2042-F24A	14+	Tu	6-7 pm	9/10-12/17	LB Cafe	\$165
2042-F24B	14+	Th	6-7 pm	9/12-12/19*	LB Cafe	\$154

\*No class 11/28



## Krav Maga

Krav Maga is a modern self-defense system designed to address and defend against present day street assaults and confrontations. It is simple, realistic, easy to learn, and an extremely efficient self-defense system. You learn it today, and you can use it tonight. The system is based upon realistic responses to assaults and aims to help the practitioner to properly react and respond to threats and learn how to disengage from the situation, or leave the scene as fast as possible, or place him/herself to be in a position of advantage against the attacker. This class takes place at Southeast Martial Arts Academy, 6564 South State Rd, Suite 500, Saline MI 48176. Instructor: Sarah Litterell



ID	AGE	DAY	TIME	DATE	LOCATION	FEE
2015-F24A	15+	F	6:30-7:30 pm	10/11-11/1	SMAA	\$75
2015-F24B	15+	F	6:30-7:30 pm	11/8-12/6*	SMAA	\$75

\*No class 11/29

## Jishukan Meditation

Are you searching for something out of life and just haven't found what you're looking for? Try this amazing meditation class taught by one of 4 remaining Shihan's in the entire world (holds the highest rank in Jujitsu and has a Japanese doctorate in medicine). Students who have been attending the class now for years report the changes are subtle but are most definitely there. Better concentration, better focus and overall better mental and physical health. Japanese meditation is the most physical form of meditation and this encompasses thousands of years of proven practices. One student recommends this class from the bottom of her heart for anyone young or old that wants to learn about and better themselves, not to mention have some fun! Students can register after the start date for a prorated fee by calling 734-401-4020. We suggest bringing a mat to class. Session A is 15 weeks long, and session B is 14 weeks long. Instructor: Doc Ping

ID	AGE	DAY	TIME	DATE	LOCATION	FEE
2026-F24A	14+	Tu	7-8 pm	9/10-12/17	LB Cafe	\$165
2026-F24B	14+	Th	7-8 pm	9/12-12/19*	LB Cafe	\$154

\*No class 11/28

# High School Enrichment



## Great Lakes Educational Group SAT Test Preparation

Whether your student wants to improve their SAT score for college admissions or enhance their scholarship opportunities, Great Lakes Educational Group's online SAT Test Preparation can help. GLEG's SAT Test Preparation offers personalized instruction tailored to your student's needs. Experienced tutors guide students step by step to help them achieve their full potential. The class covers key strategies for each test section, mastering the material, and taking practice tests in a realistic setting. Students should expect weekly homework and will need a computer for online classes. They will receive the Zoom Meeting ID before the first session. A course book will be available for pickup from Saline Community Education starting the week of October 7th. Registration ends on September 26th, 2024. Late registrations, with a \$35 late fee, will be accepted if space allows. Please call Saline Community Education to check availability after the registration deadline. No refunds will be processed after the registration deadline (September 26th, 2024.) Instructor: Great Lakes Educational Group

ID	GRADE	DAY	TIME	DATE	LOCATION	FEE
9021-F24A	11-12	Su	1-4 pm	10/13-12/1*	Virtual	\$649

\*No class 11/24



## Secrets for a Strong College Application Essay

Need to write a strong, compelling college application essay? Debbie Merion and Sarah J. Robbins from EssayCoaching.com will show you how! Learn what admissions officers are looking for, how to find your best topic, how to bring out your unique writing voice, engaging ways to emphasize your strengths without bragging, and how parents can help. Discuss and take home helpful handouts and samples of winning essays. If you have essay drafts (totally optional), bring them for feedback from the instructor. Expect to leave class energized, with a jumpstart on writing your best college essay.

Instructors: Debbie Merion and Sarah J. Robbins

ID	AGE	DAY	TIME	DATE	LOCATION	FEE
9010-F24A	14+	Tu	7-8:30 pm	9/17	Virtual	\$19

## Strengthen Your College Application Essay

o you have a college application essay draft that needs polishing? We'll show you how to sound impressive without bragging, and how to edit your essay in stages. In this class from EssayCoaching.com, Sarah J. Robbins and Debbie Merion will share proven techniques to finalize your most compelling essay. You'll learn to add detail, improve clarity, trim unnecessary words and keep the good stuff! You'll take home editing tips and sample essays, and leave stress behind. If you have essay drafts (totally optional), bring them to edit.

Instructors: Debbie Merion and Sarah J. Robbins

ID	AGE	DAY	TIME	DATE	LOCATION	FEE
9011-F24A	14+	W	7-8:30 pm	10/9	Virtual	\$19





# Youth Music & Arts

## Pen & Ink Watercolor Journal Class

Create your own art journal! Develop your drawing skills while learning inking techniques, then bring them to life with watercolor, graphite, even mixed media. Create "sketches" to capture a spontaneous moment, develop a concept, or even share your inner thoughts.

Instructor: Keith McGuire

ID	AGE	DAY	TIME	DATE	LOCATION	FEE
8032-F24A	11-17	Sa	11 am-1 pm	9/7-9/28	LB 09	\$96
8032-F24B	11-17	Sa	11 am-1 pm	10/5-10/26	LB 09	\$96
8032-F24C	11-17	Sa	11 am-1 pm	11/2-11/23	LB 09	\$96
8032-F24D	11-17	Sa	11 am-1 pm	12/7-12/21	LB 09	\$72

## Basic Drawing for Kids

This class teaches basic fundamentals early and can set your child on a path to developing their talent faster. We teach students to see and draw the basic shapes within a subject, then build it from the inside out. Learn how to shadow to create depth, and create more dynamic pictures with perspective drawing.

Subject matter ranges from cartoons to wildlife, even the still-lives are fun! Parents and caregivers can stay and draw for free, learn something together! Instructor: Keith McGuire



ID	AGE	DAY	TIME	DATE	LOCATION	FEE
8009-F24A	6-11	Sa	9:30-10:30 am	9/7-9/28	LB 09	\$96
8009-F24B	6-11	Sa	9:30-10:30 am	10/5-10/26	LB 09	\$96
8009-F24C	6-11	Sa	9:30-10:30 am	11/2-11/23	LB 09	\$96
8009-F24D	6-11	Sa	9:30-10:30 am	12/7-12/21	LB 09	\$72

## The Art of Dynamic Character

### Illustration - Saturday Class



Are you ready to learn good drawing fundamentals and dynamic figure drawing? Want to make your characters come alive with emotion and movement? Learn from gesture drawing, drawing from the inside out, and shadowing techniques to create realistic figures, animals, and yes, even

dancing fruit. Use inking and coloring techniques to create finished renderings! Share ideas and concepts with other students interested in Manga, American comic books, Posters, graphic novels, video games, or even cartoons. Instructor: Keith McGuire

ID	AGE	DAY	TIME	DATE	LOCATION	FEE
8014-F24A	11-17	Sa	11 am-12:15 pm	9/7-9/28	LB 09	\$96
8014-F24B	11-17	Sa	11 am-12:15 pm	10/5-10/26	LB 09	\$96
8014-F24C	11-17	Sa	11 am-12:15 pm	11/2-11/23	LB 09	\$96
8014-F24D	11-17	Sa	11 am-12:15 pm	12/7-12/21	LB 09	\$72

## The Art of Dynamic Character

### Illustration - After School Class

Are you ready to learn good drawing fundamentals and dynamic figure drawing? Want to make your characters come alive with emotion and movement? Learn from gesture drawing, drawing from the inside out, and shadowing techniques to create realistic figures, animals, and yes, even dancing fruit. Use inking and coloring techniques to create finished renderings! Share ideas and concepts with other students interested in Manga, American comic books, Posters, graphic novels, video games, or even cartoons. Instructor: Keith McGuire

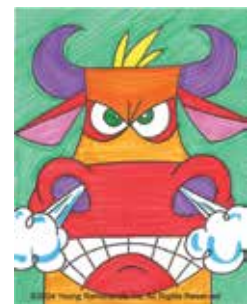
ID	AGE	DAY	TIME	DATE	LOCATION	FEE
8033-F24A	11-17	W	3-4:15 pm	8/28-9/25	MS FL	\$120
8033-F24B	11-17	W	3-4:15 pm	10/2-10/30	MS FL	\$120
8033-F24C	11-17	W	3-4:15 pm	11/6-11/13	MS FL	\$96
		Tu	3-4:15 pm	11/19-11/26		
8033-F24D	11-17	W	3-4:15 pm	12/4-12/18	MS FL	\$72

## Power of Drawing - 10 weeks of Elementary and Cartoon Drawing

Is your home overflowing with your child's creative masterpieces? It's time to take their artistic talent to the next level with Young Rembrandts! Marvel as their pencils fly across the page, bringing to life everything from delicious taffy apples to charming seasonal scarecrows, and even sassy bunnies. We're adding a sprinkle of Van Gogh's magic too, with vibrant sunflower sketches that burst off the page. The cartoon lessons will add a giggle as their drawings come to life feature everything from baseball playing animals to ogres with tons of attitude. Enroll your budding artist today and let the giggles and doodles flow! Instructor: Young Rembrandts

ID	GRADE	DAY	TIME	DATE	LOCATION	FEE
8002-F24WM	K-3	M	3:50-4:50 pm	9/23-11/25	WM	\$214
8002-F24HR	4-5	Tu	3:50-4:50 pm	9/24-11/26	HR Media	\$214
8002-F24PR	K-3	W	3:50-4:50 pm	9/25-12/12*	PR FL	\$214
8002-F24HV	K-3	Th	3:50-4:50 pm	9/19-12/19*	HV 207	\$214

\*No class 10/17, 10/31, 11/20, 11/21, 11/27, 11/28





# Youth Music & Arts



## 7th Grade Jazz Band

Middle School Jazz Band is open to all Saline Middle School students currently enrolled in curricular 7th grade band, orchestra, or choir. We will be playing every thing from swing to rock with a little Latin thrown in also. Any band instrument is welcome. In addition we also need drum set, guitar, bass guitar and piano. If you are interested in drum set, guitar, bass guitar, or piano, please sign up in the band room for a very brief audition. Instructor: Benjamin Reed

ID	GRADE	DAY	TIME	DATE	LOCATION	FEE
5172-F24	7th	7	Tu	6:45-7:30 am	10/22-5/6	MS Band \$165

## 8th Grade Jazz Band

Middle School Jazz Band is open to all Saline Middle School students currently enrolled in curricular 8th grade band, orchestra, or choir. We will be playing every thing from swing to rock with a little Latin thrown in also. Any band instrument is welcome. In addition we also need drum set, guitar, bass guitar and piano. If you are interested in drum set, guitar, bass guitar, or piano, please sign up in the band room for a very brief audition. Instructor: Benjamin Reed

ID	GRADE	DAY	TIME	DATE	LOCATION	FEE
5172-F24	8th	8	Th	6:45-7:30 am	10/24-5/8	MS Band \$165

## Saline Swarm of Voices

Saline Swarm of Voices is a choir for all students in 3rd and 4th grade. We will learn how to sing and have fun making music with others! Instructor: Eric Floetke

ID	GRADE	DAY	TIME	DATE	LOCATION	FEE
5175-F24A	3-4	W	4:15-5:15 pm	10/23-5/28	MS Choir	\$180



## Middle School Fiddle Club

Explore a mix of fun, rhythmic music and become a part of the Saline fiddling tradition! By grooving with the bow and expanding on techniques learned in orchestra, students will explore groove based music from all around the world with Mr. Briere and friends. The Saline Middle School Fiddle Club is for music students in 6th, 7th, and 8th grades with experience performing on the violin, viola, cello, bass, guitar, mandolin, or drumset. Students enrolled in the Saline Middle School orchestras, choirs or bands are eligible to participate. The SMS Fiddle Club meets Wednesday mornings before school Please specify instrument and t-shirt size at time of registration.

Instructor: Matthew Briere

ID	GRADE	DAY	TIME	DATE	LOCATION	FEE
5163-F24A	6-8	W	6:50-7:35 am	10/23-5/28	MS Orch	\$180





# Youth Music & Arts

## Youth Theater Guild

"The play's the thing!" Youth Theater Guild is a theater production class for students in grades 2nd-8th. We will mount a full-scale, non-musical of a production based on a popular children's book and in the process of learning and rehearsing the show will focus on important drama concepts including audition tips, effective use of voice, face, and body in creating a character, scene interpretation, creating emotional levels and effective pacing. Students will familiarize themselves with basic stage areas and commonly used theatre terminology and concepts. Auditions for specific roles will take place once the class begins and performances will be held in Liberty Auditorium, November 8 and 9 at 7:00 P.M. in Liberty Auditorium. Instructor: Alyssa Dawson, Rebecca L. Groeb

ID	GRADE	DAY	TIME	DATE	LOCATION	FEE
5162-F24A	2-8	Sa	9 am-12 pm	9/7-11/2	LB Auditorium	\$285
		Tu	6-8 pm	9/10-10/29		
		Su-Th	6-8:30 pm	11/3-11/7		

## 3rd Eye Art Studio Classes

3rd Eye Art Studio is offering a wide range of classes this fall at their Saline studio, including painting, candle making, wood working, resin, and art vs. depression. See full program offerings at [salineonline.reg.eleyo.com](https://salineonline.reg.eleyo.com) by searching for "3rd Eye".

## Coming Attraction - Junior Theater

Junior Theater will celebrate it's 20th anniversary this winter by producing another musical production for grades 2nd-8th! We will mount this full-scale production with performances scheduled for mid-March with Tuesday evening and Saturday morning classes/rehearsals beginning in early January. Check the Saline Community Education winter & spring program guide for registration dates!





# Youth Enrichment



## Michigan Easy Bake Off

This is a baking event using the new Easy Bake Oven. Each team will consist of a student and parent or guardian. They will prepare their own cake batter and frosting using the provided supplies. The participants will have one hour to create their masterpiece to present to the judges. Cakes are judged on decoration only. The winner of the event will receive the first place bakers ribbon.

Instructor: Spencer Whitehead

ID	AGE	DAY	TIME	DATE	LOCATION	FEE
5164-F24A	5-12	Th	6-8 pm	10/17	PR Cafeteria	\$20

## NASA Academy

NASA and Mad Science collaborate to educate the next generation! Children go on a voyage of discovery to space with unique hands-on activities and amazing demonstrations. They explore the sun and stars, space technology, rocket science, the atmosphere, planets and moons, supernovas and more!

Instructor: Mad Science of Detroit



ID	GRADE	DAY	TIME	DATE	LOCATION	FEE
5116-F24HV	K-3	W	3:45-4:45 pm	9/11-10/16	HV 207	\$209
5116-F24WM	K-5	Th	3:45-4:45 pm	9/12-10/24*	WM	\$209
5116-F24PR	K-3	F	3:45-4:45 pm	9/13-10/25*	PR FL	\$209

\*No class 10/17, 10/18



## Fairy on the Fly: Believe and Belong Book Club

Each week we will explore a chapter of the Fairy on the Fly Light Your Wings book with fairy-themed activities including snacks, art, crafts, friendship-building and self-reflection. Instructor: Gaynor Meilke

ID	GRADE	DAY	TIME	DATE	LOCATION	FEE
5179-F24A	K-6	W	3:45-5:30 pm	9/11-12/18	WM	\$260



## How to be a Great Babysitter

Learn the ins and outs of creating a great babysitting business! Find answers to common babysitting questions like sibling squabbling and mealtime tips. Other topics covered are American Heart Association CPR, diapering duties, bedtime tips and much more. Each participant will receive a certificate through Heartbeat, LLC. Please bring a sack lunch.

Heartbeat LLC, a certified American Heart Association Training Center, was founded by Tim O'Connor over twenty years ago. Since that time tens of thousands of individuals have been trained in American Heart Association CPR and First Aid. The babysitting division utilizes certified BLS instructors who have experiences in providing education to youth and adults in a variety of settings.

Instructor: Cari O'Connor

ID	AGE	DAY	TIME	DATE	LOCATION	FEE
5115-F24A	11+	Sa	10 am-2 pm	9/28	LB Boardrm	\$83





# Youth Enrichment

## Chess Lions

Chess class open to students of all levels and experience. Students will be given chess instruction on basic opening strategies, middlegame tactics, and endgame principles. Students will then play a variety of practice games and mini tournaments, as well as a few chess variants (i.e. Bughouse and Chess960). The goal is for students to have fun while improving their analytical, critical thinking skills, and sportsmanship. Instructor: David Cogswell

ID	GRADE	DAY	TIME	DATE	LOCATION	FEE
5018-F24WM	K-3	Tu	4-5 pm	9/10-11/12	WM	\$130
5018-F24HR	4-5	W	4-5 pm	9/11-11/13	HR	\$130
5018-F24PR	K-3	Th	4-5 pm	9/12-12/5*	PR FL	\$130
5018-F24HV	K-3	F	4-5 pm	9/13-12/6*	HV 207	\$130

\*No class 10/17, 10/18, 11/21, 11/22, 11/28, 11/29

## Chess Lions Intermediate

Chess class open to intermediate level chess players. Students should be able to play a legal game of chess, and have a good understanding of castling, checkmate, and stalemate. Students will be given chess instruction on more advanced opening strategies, middlegame tactics, and endgame principles. Students will then play a variety of training games and practice tournaments. The goal is for students to have fun while improving their analytical, critical thinking skills, and sportsmanship. Instructor: David Cogswell

ID	GRADE	DAY	TIME	DATE	LOCATION	FEE
5019-F24A	K-8	W	6-7:30 pm	9/11-11/13	LB Boardrm	\$130

## Chess Lions Tournament Team

This class is for students who are interested in competing in chess tournaments as part of the Saline Chess Lions club team. The class will focus on tournament preparation. Students will work on higher level tactics, openings, and positional play. We will also work on notation (writing down our moves) and clock play (how to manage your time in a chess match). As always, our focus is on demonstrating good sportsmanship and proper tournament etiquette in every single competition. Instructor: David Cogswell

ID	GRADE	DAY	TIME	DATE	LOCATION	FEE
5187-F24A	K-8	Th	6-7:30 pm	9/12-11/21*	LB Boardrm	\$130

\*No class 10/31



# Youth Enrichment



JOIN US FOR  
SALINE COMMUNITY EDUCATION'S



Sweetest Day  
Sweetheart Family

# DANCE

DJ & Dancing - Refreshments - Photos - Goodie Bags

THURSDAY,  
OCTOBER 17  
6-8 PM

\$35 FOR FIRST COUPLE  
\$5 EACH ADDITIONAL CHILD  
OR ADULT IN THE SAME  
FAMILY

SALINE  
HIGH SCHOOL  
COMMONS

Pre-registration required at [salineonline.reg.eleyo.com](https://salineonline.reg.eleyo.com)



# Youth Recreation

## Kidokinetics Sportsplay

Sportsplay classes offer the widest variety of sports and activities! Sportsplay is a fun introduction to sports designed to help kids get moving and build confidence! Each week features a warm-up, an introduction to a new sport or activity, free play, cool down, and an age-appropriate anatomy and physiology lesson. We love emphasizing that educational aspect at the end with flashcards detailing different bones and muscles we used that day. Students love telling their parents about what they learned!



Instructor: Kidokinetics

ID	GRADE	DAY	TIME	DATE	LOCATION	FEE
6135-F24A	K-5	W	4-5 pm	9/25-12/11*	WM Gym	\$250
*No class 11/20, 11/27						

## Heritage Tennis Lessons

Tennis lessons for beginners to introduce the basic skills of tennis. We will have fun hitting tennis balls while learning the fundamentals of stroke technique and court movement.

Instructor: Ryan Burnham & Jessica Yaksic

ID	GRADE	DAY	TIME	DATE	LOCATION	FEE
6138-F24A	4-5	Th	4-5 pm	9/5-9/26	LB Courts	\$75
6138-F24B	4-5	Tu	4-5 pm	10/1-10/29	LB Courts	\$94

## Girls on the Run

Girls on the Run is a non-profit organization that envisions a world where every girl knows and activates her limitless potential and is free to boldly pursue her dreams. Our eight-week program for 3rd through 6th graders meets twice weekly for 90 minutes and our fall season runs mid-September through November. Our online registration includes a sliding scale registration fee, opens online in August. Lessons are led by trained volunteer coaches who guide and mentor the children through a brand NEW curriculum that focuses on life-long skills to improve emotional and physical health. The program culminates in a non-competitive Girls on the Run 5k event which gives the participants a chance to shine and an overwhelming sense of accomplishment. Find more information here: <https://www.girlsontherunsemi.org/>

Registration: Aug. 12nd-Sept. 27th  
Season runs: Sept. 22nd-Nov. 22nd

## Middle School Tennis Team

Elevate your game with SMS tennis team training. This course is meant for 6th-8th grade, intermediate players with sights on high school tennis at either the JV or Varsity level. Players should be able to consistently rally both forehands and backhands from the baseline, hit technically correct volleys, and serve with regularity. Our structured practices include USTA recommended, rigorous drills meant to simulate match play and build tactical proficiency. Typically, there are opportunities to compete in two league matches and three intrasquad matches in addition to the regularly scheduled practices. Beginning players not ready for this level of intensity should enroll in the Middle School Beginner Tennis Course. Practices M/Tu/W 3:00-4:30 pm. Intrasquad matches could be scheduled for Fridays. Practices held at SMS courts. Fee includes team T-shirt. Instructors: Paula Recknagel, Paul Moore, + Girls Varsity Tennis Players

ID	GRADE	DAY	TIME	DATE	LOCATION	FEE
6019-F24A	6-8	M-W	3-4:30 pm	9/9-10/16	MS Courts	\$270



## Middle School Beginner Tennis

The Middle School Beginner Tennis Course offers a fun and educational introduction for 6th-8th graders new to the game. Course Objectives: Learn the fundamentals of tennis, including etiquette and scoring, proper grips, footwork, and basic strokes like forehand, backhand, volleys, and serves. The course meets six consecutive Thursdays, with sessions held once a week for 90 minutes. One additional session may be added for match play. After completion of the beginner course, enrolling for the Middle School Tennis Team is encouraged. Fee includes T-shirt.

Instructor: Paula Recknagel + Girls Varsity Tennis Players

ID	GRADE	DAY	TIME	DATE	LOCATION	FEE
6097-F24A	6-8	Th	3-4:30 pm	9/5-10/10	MS Courts	\$120



# Youth Recreation



## Kick Start Karate

The Kick Start Karate Program offers traditional martial arts training to children ages 6 through 12 and emphasizes self-defense, physical fitness, conflict resolution, teamwork and anti-kidnapping techniques. This program is designed specifically for children and teaches prevention first. It does not promote active aggressiveness, but teaches children to respect themselves, others and the skills they learn. There is no better program for kids! Wear loose fitting clothes. A responsible adult must remain in attendance during class. This class takes place at Southeast Martial Arts Academy, 6564 South State Rd, Suite 500, Saline MI 48176. Instructor: Sarah Litterell

ID	AGE	DAY	TIME	DATE	LOCATION	FEE
6017-F24A	6-12	F	6-6:30 pm	10/11-11/1	SMAA	\$44
6017-F24B	6-12	F	6-6:30 pm	11/8-12/6*	SMAA	\$44

\*No class 11/29

## Ninjas Karate

The Ninjas Karate Program is an introductory karate class specifically designed for children ages 4 and 5. It focuses on teaching children eight important main life skills: focus, memory, teamwork, discipline, self-control, fitness, balance and coordination. All this is achieved through exciting and fun games and activities! Wear loose fitting clothes. A responsible adult must remain in attendance during class. This class takes place at Southeast Martial Arts Academy, 6564 South State Rd, Suite 500, Saline MI 48176. Instructor: Sarah Litterell

ID	AGE	DAY	TIME	DATE	LOCATION	FEE
6018-F24A	4-5	F	5:30-6 pm	10/11-11/1	SMAA	\$44
6018-F24B	4-5	F	5:30-6 pm	11/8-12/6*	SMAA	\$44

\*No class 11/29

## Flow2Grow Youth Yoga - K-3 Classes

Introduce your child to the mind-body-spirit connection of yoga fused with the fun of friendship, stories, games and crafts!

Instructor: Gaynor Meilke - Charisma Ink

ID	GRADE	DAY	TIME	DATE	LOCATION	FEE
6085-F24A	K-3	Sa	9:30-11 am	9/14-11/2	LB 33	\$200
6085-F24B	K-3	Sa	9:30-11 am	11/9-12/14*	LB 33	\$125

\*No class 11/30

## Flow2Grow Youth Yoga - Swift Serenity Yoga

Learn yoga basics plus relaxation and mindfulness practices inspired by the music and creativity of Taylor Swift. Each class will feature 30 minutes of yoga/mindfulness/meditation plus a Taylor-inspired craft, dance, and snacks. Instructor: Gaynor Meilke - Charisma Ink

ID	GRADE	DAY	TIME	DATE	LOCATION	FEE
6086-F24A	K-8	Sa	1-3 pm	9/14-10/12	LB 33	\$150

## Choi Kwang Do Martial Art for Children

Choi Kwang Do is a dynamic, innovative approach to martial arts training. It is based on traditional martial arts philosophy that emphasizes the idea of personal development being paramount, rather than sports competition. Classes provide a friendly environment to help students grow in self-discipline and self-confidence. We keep your child moving and motivated.



Watch them gain self-confidence as they learn to keep fit and channel aggressive energy. Each class incorporates fast action drills that build martial art and life skills. We have incentives for good academic reports as well as good behavior at home and school. Life skills such as healthy eating, fitness, integrity, "stranger danger" and much more are integrated into our age appropriate martial art instruction. Enroll your child and begin their character building journey today! This is a continuous program. Note: added fees apply if student wishes to test for advancement (see instructor). Instructor: Master Stoddard

ID	AGE	DAY	TIME	DATE	LOCATION	FEE
6020-F24A	5-12	Tu, Th	5:30-6:20 pm	9/10-10/24	LB 9 & 11	\$90
6020-F24B	5-12	Tu, Th	5:30-6:20 pm	10/29-12/19*	LB 9 & 11	\$90

\*No class 11/5, 11/28





# Youth Recreation

## Heritage Cross Country

Come join us and learn the fun involved with the sport of Cross Country running! Participants will learn through teamwork, unique experiences, various types of workouts, drills and fun what this fun sport has to offer everyone. Workouts will have instruction in training, racing and stretching and will include work on individual goals, performance and personal achievements. There will be two to four competitions throughout the season. Please note that some competitions will take place on Saturdays. Complete schedule to be posted on the Community Education web-site upon completion. Please e-mail Coach Marcello Arreguin with questions at salineheritagerunning@gmail.com. A parent meeting will be held September 3rd at 5:15 pm. Instructor: Coach Arreguin

ID	GRADE	DAY	TIME	DATE	LOCATION	FEE
6024-F24A	4-5	MTuTh	3:45-5 pm	9/3-10/10	HR Outside	\$150

## 6th Grade Cross Country

Sixth grade cross country is for students who enjoy running or anyone new wanting to try the sport in a positive team environment. Cross country will offer kids the chance to experience the fun, train hard and compete in MHSAA meets and competitions throughout the season. Please note some meets will take place on Saturdays. The complete 2024 season calendar will be posted on the Saline Community Education and Athletics web-sites once finalized. For up to date information and if you would like to be added to Coach Stafford's e-mail loop please contact her at staffors@salineschools.org. Please note - In order to participate all runners are required by MHSAA to have a current physical on file, dated after April 15th. Instructor: Coach Stafford and the SMS XC Coaches

ID	GRADE	DAY	TIME	DATE	LOCATION	FEE
6023-F24A	6	M-F	3-5 pm	8/27-10/16	MS Outside Behind Cafeteria	\$150



## Middle School Cross Country Camp

Saline's middle school cross country coaches invite potential middle school cross country runners to attend a pre-season training camp. Come join us as we work on various aspects of training and prepare all runners for the upcoming season. Discussions and supplemental work on how to train and race for success, as well as coach led support on setting personal goals for the season will be included. Training groups and organization will be based on the ability and fitness level of each runner all while working together within a team environment. Participants should plan to train between 2 and 4 miles each day based on fitness and experience. Complete details will be presented in the coaches' Week Ahead email close to the first day. Registration also includes a piece of running gear. **MUST REGISTER BY THURSDAY August 15th** to be guaranteed gear item. Instructor: Coach Stafford and the SMS XC Coaches

ID	GRADE	DAY	TIME	DATE	LOCATION	FEE
6022-SU24A	4-8	M-F	8-9:30 am	8/19-8/23	HS Behind Pool	\$90

## Middle School Cross Country Winter Conditioning

The middle school cross country coaches will be offering a winter training/off season running and conditioning program to help cross country runners stay in shape and continue their training in a positive team oriented environment during the late fall/early winter months. Conditioning will meet three days a week and within each week work on various areas to keep runners in shape, strong and healthy during the off season. Along with running there will be, as always, lots of fun along the way. So come join us as we stay in shape and brave any kind of weather! Participants will receive a special piece of logo wear designed for happy running in mind.

Instructor: Coach Stafford and MS XC Coaching Crew

ID	GRADE	DAY	TIME	DATE	LOCATION	FEE
6001-F24A	6-8	MTuTh	3-4:30 pm	12/2-12/19	MS Outside Behind Cafeteria	\$80

# Youth Recreation



## Girls Lacrosse MS/Youth Camp

Join our Saline High School Girls lacrosse coaches and players for a youth and MS camp that will focus on skills, drills, game play and fun. Girls of all skill levels will have the opportunity to learn and grow under the guidance of experienced coaches and players who are dedicated to the development of each player. Whether your player is just picking up a lacrosse stick for the first time or aiming to refine their techniques - this is the camp for you. Please provide your own equipment (lacrosse stick and goggles) if you have it but if you don't, no need to worry- we will have extras to provide! Instructor: HS Lacrosse Coaches

ID	GRADE	DAY	TIME	DATE	LOCATION	FEE
6090-SU24A	K-8	W-F	9 am-12 pm	8/7-8/9	HS Aux/Stadium	\$100





# play **FLAG**



## Girls and Boys Pre-K Through 8th

- No Experience Necessary
- Multiple Locations Are Available
- Weekend Games And Practices

- Practice Held 1 Hour Before Games
- Season Starts September 7th or 8th
- Deadline is July 28th

\*Players Receive An Official NFL FLAG Reversible Jersey & Flags

[www.MichiganYouthFlagFootball.com](http://www.MichiganYouthFlagFootball.com)





# Youth Recreation

## Mini-Rays Pre-Swim Team

The Mini-Rays is a pre-competitive swim team. This program is designed for ages 5-9 interested in competitive swimming but not yet ready for the full demands of a competitive team. Swimmers will learn the fundamentals of competitive swimming. Swimmers will have an opportunity to compete in meets throughout the season. Our fall 2024 season will begin Wednesday, September 4th. Anyone interested should be able to swim one length of the pool (25 yards) repeatedly without assistance. Swimmers should be comfortable swimming on their own. NO REFUNDS will be offered after September 20th. For more detailed information or to register please visit our team website [www.salineswimteam.com](http://www.salineswimteam.com). Please also join our email list by emailing Nick Munsell at [munselln@salineschools.org](mailto:munselln@salineschools.org).

Prior to registration all NEW swimmers must attend one of our swimmer evaluation days.

New Swimmer evaluations: All at Saline High School Natatorium

Evaluation #1 7/16 6:30 pm

Evaluation #2 8/22 6:00 pm

Evaluation #3 8/29 6:30 pm

\*A calendar with practice days and times will be posted on our website and sent to everyone on the email list as soon as it is finalized.



## Saline Middle School Swim & Dive

Middle school swimming and diving is for those students who may be interested in learning more about the sport in a positive team environment. The season will focus on all aspects of competitive swimming and diving. The team is for 6th, 7th and 8th grade boys and girls. This exciting season will consist of several dual meets and will end with the MISCA meet. Practice days and times may vary based on pool availability; calendars with dates and times for practices and meets will be distributed and posted closer to the beginning of the season. Typically, between meets and practices, they will meet about 4 times per week. Tentative first practice will be November 18th @ 8 pm, details will be sent to registered members closer to the start of the season.

ID	GRADE	DAY	TIME	DATE	LOCATION	FEES
11001-F24A	6-8	M-Th	8-9:15 pm	11/18-1/25	HS Pool	\$210

## Saline Swim Team

Saline Swim Team (SST) is a competitive swim team offering swimmers competitive opportunities on both a local and national level. As a member of SST, swimmers will have the opportunity to learn all aspects of competitive swimming. SST serves a variety of abilities ranging from swimmers who are relatively new to competitive swimming up to swimmers competing at elite levels nationally. The season consists of daily training - up to 6 sessions per week (depending on group placement). There are several meets throughout the season. Participants should be familiar with all four competitive strokes and comfortable swimming for 50 yards (2 lengths of the pool). We also have our Mini-Rays program for those who might not be ready for our more competitive groups. If your swimmer participated with us in the past year, you will receive an email with their group assignment. All other swimmers please join us for one of the evaluation days (details below). All participants should be formally registered by Monday, August 26th. NO refunds will be offered after September 24th. For more detailed information or to register, please visit our team website [www.salineswimteam.com](http://www.salineswimteam.com). Please also join our email list by emailing Nick Munsell at [munselln@salineschools.org](mailto:munselln@salineschools.org).



Prior to registration all NEW swimmers must attend one of our swimmer evaluation days.

New Swimmer evaluations: All at Saline High School Natatorium

Evaluation #1 7/16 6:30 pm

Evaluation #2 8/22 6:00 pm

Evaluation #3 8/29 6:30 pm

\*A calendar with practice days and times will be posted on our website and sent to everyone on the email list as soon as it is finalized.



# Youth Recreation

## Little Dribblers Basketball Camp

This summer camp allows your little one to experience Saline basketball first hand. A local opportunity that teaches players basic fundamentals of basketball - allowing participants to develop in a fun environment. This is a co-ed program and all skill levels are welcome. Participants will receive a SALINE BASKETBALL t-shirt with registration. Instructors: Sam & Nikki Hotopp

ID	GRADE	DAY	TIME	DATE	LOCATION	FEE
6060-SU24A	K-2	M-W	9-11 am	8/12-8/14	MS Gym	\$80

## After School Basketball

This basketball program is designed for all students right after school. Your child will have the opportunity to learn the basic fundamentals of basketball and enhance their current skills in a fun atmosphere. All skill levels are welcome.

Instructors: Sam and Nikki Hotopp, and HS Student Athlete Helpers

ID	GRADE	DAY	TIME	DATE	LOCATION	FEE
6028-F24HV	K-3	M	4-5 pm	9/16-10/21	HV Gym	\$115
6028-F24PR	K-3	Tu	4-5 pm	9/17-10/22	PR Gym	\$115
6028-F24HR	4-5	W	4-5 pm	9/18-10/23	HR Gym	\$115
6028-F24WM	K-3	Th	4-5 pm	9/12-10/24*	WM Gym	\$115

\*No class 10/17

## Boys Travel Basketball Tryouts

Tryouts for grades 4th-8th boys travel basketball will take place on Sunday, September 8 with the season running November through March. Tryouts for grades 7-8 will be on the same day, but with their season running January through March. 7th and 8th grade boys do not start their season until January due to the Middle School season. Tryouts will be at the Saline Middle School Gym. Registration for tryouts is required. There is no fee for tryouts. There is no makeup tryout. 3rd graders are more than welcome to try out for the 4th grade team.

ID	GRADE	DAY	TIME	DATE	LOCATION
6012-F24A	4-5	Su	11:30 am-12:45 pm	9/8	MS Gym
6012-F24B	6-8	Su	1-2:15 pm	9/8	MS Gym

## Girls Travel Basketball Tryouts

Tryouts for grades 4-8 girls travel basketball will take place on Sunday, September 8th. The 4-6 grade season will run November through March. The 7-8 season will run November through December. The 7th/8th grade team has a shortened season due to the Middle School season. Registration for tryouts is required. There is no fee for tryouts. There is no makeup tryout.

ID	GRADE	DAY	TIME	DATE	LOCATION
6084-F24A	4-8	Su	10-11:15 am	9/8	MS Gym

## Youth Rec Basketball League

The purpose of the Community Education Basketball League is to provide students with an opportunity to learn and develop basketball skills, play games in an organized setting, understand good sportsmanship and teamwork, and have fun! These leagues have been created for both the beginning and the experienced player — no previous experience is required. This league is open to all boys in grades 1-8 and girls in grades 1-6. The league will be divided into grade level divisions - these divisions will be divided based on numbers of registrations in each grade. Once-a-week practices begin the week of January 6th. Please indicate days you cannot practice at time of registration. **Registration deadline is December 1st.** Games are Saturdays - January 25, February 1st, February 8th, February 22nd, and March 1st. There are no games over Martin Luther King Weekend or President's Day Weekend. There will be 5 weeks of games and 7 weeks of practices. Players need a jersey to participate in this league. Returning players may use their jersey from last year. New jerseys can be purchased with United Image Group at SalineSpirit.com. Please indicate if you'd like to coach during registration. \*Grade levels of league divisions are subject to change based on enrollment numbers.





# Youth Recreation

## Fall Cheerleading Clinic

This is a chance for young 5s thru 5th grade to practice and cheer with the Varsity cheer team at Saline! The kids will have a pregame performance, then be able to cheer the first half of a Varsity football game on October 4th. Coaches will let you know what time to arrive to the game for the performance! The clinic includes two practice days, cheering at a Varsity game, a tshirt and a bow! The Varsity cheer team will provide instruction on cheers, tumbling and stunting! Instructors: Varsity Cheer Coaches & Cheerleaders

ID	GRADE	DAY	TIME	DATE	LOCATION	FEE
6108-SU24A	Y5-5	M, W	6-8 pm	9/30, 10/2	HS Wrestling	\$75
		F	TBD	10/4	HS Stadium	

## Junior Hornets Dance Team

Modeled after the varsity team, dancers will learn basic pom technique, jazz and hip hop. Team bonding is the number one priority to create an atmosphere where children feel empowered to perform! End of the season will be at DTU Detroit competition where we will compete our routine and be alongside the varsity girls all day! Instructor: Nina Eisenmann

ID	GRADE	DAY	TIME	DATE	LOCATION	FEE
6134-F24A	3-5	Su	2-3 pm	10/27-1/12	HR Gym	\$175



## Middle School Competitive Cheer

If your child is planning to participate and/or try out for the MS Competitive Cheer team this winter, please make sure to register for tryouts to receive information!

Join us this winter learning the ins and outs of competitive cheer! Competitive cheer tryouts are now open to any girls in 6th-8th grade! This program will teach beginner and intermediate cheer skills including stunting, tumbling, motions, and jumps. Athletes will also be taught two competitive rounds which they will perform at six meets throughout the season. Fundraising and/or additional fees will be required to obtain competitive team wear. Middle school competitive cheer athletes will also be attending gymnastics every week - the fees for weekly gymnastics is included in the registration fees. Fees for the team will be collected after tryouts take place.

Tryout dates will be November 11, 12, and 13th from 6:30-8:30 PM in the Saline HS Wrestling Room. The first official practice will be on Monday, November 18th. The season will run until mid-February. There will be a pre-tryout parent/cheerleader informational meeting on Monday, October 28th at 6:30 pm in the HS Commons. Requirement: Backbend from standing position. Preferred: Back walkover

Practices: Monday - Friday, 6:30-8:30 pm in the Saline HS Wrestling Room. Cost: \$300. \*There is no cost to tryout\*

If you have any questions regarding the competitive cheer team please email Coach Kayla at [marklekayla@gmail.com](mailto:marklekayla@gmail.com) or Coach Alexis at [anschmi@umich.edu](mailto:anschmi@umich.edu).





# Youth Recreation



## Youth Volleyball League (New Format)

The purpose of the Community Education Volleyball League is to provide students with an opportunity to learn and develop volleyball skills, play games in an organized setting, understand good sportsmanship and teamwork, and have fun! The Saline Youth Rec Volleyball league will be NEWLY FORMATTED this year. We will be joining an outside league - the Tecumseh Youth Volleyball league. Practices will take place ONCE A WEEK on Tuesdays OR Thursdays at a Saline school but games will be played at Tecumseh High School, where we will compete against other schools in the league. Teams that are a part of the league are Tecumseh, Onsted, Hudson, Chelsea. A game schedule will be shared by the league.

This league is designed for both beginning and experienced players, and no previous volleyball experience is required. This league is open to all girls in grades 3-4 and 5-6 and will run 6 weeks of practices and 5 weeks of games. Beginning the week of September 3rd, practices will be held once a week on weekdays (practices will be scheduled on Tuesdays or Thursdays) and will run for an hour and a half. Practice times and locations may vary from team to team. Games will be scheduled on Sundays beginning on September 14th. Players need a jersey to participate in this league. Returning players may use their jersey from last year. New jerseys can be purchased with United Image Group at SalineSpirit.com. Volunteers are needed to coach each team!

Grades 3rd/4th, Grades 5th/6th, Fee: \$95

## Boys Youth/MS Volleyball League

Check with Saline Community Education ([salineonline.reg.eleyo.com](http://salineonline.reg.eleyo.com)) for information on a boys youth/middle school volleyball league as it becomes available. We're looking to have the start date of this league in early September. Details are currently TBD.

## Soccer Shots

A soccer class that focuses on individual skill, fitness, and sportsmanship, providing an opportunity for children to be challenged through soccer skills, fun games, and team interaction. The curriculum for this program is created for school-age children. Children will also be introduced to competition in a developmentally appropriate manner. This program does not have an indoor location and class may be canceled due to inclement weather. Instructor: Soccer Shots



ID	AGE	DAY	TIME	DATE	LOCATION	FEE
6139-F24WM	5-9	M	3:45-4:45 pm	9/9-10/14	WM Field	\$99
6139-F24HV	5-9	Th	3:45-4:45 pm	9/12-10/24*	HV Field	\$99

\*No class 10/17

## Baton Twirling for Beginners

Join this unique sport that combines athleticism and art. Learn basic twirls, marching, and bodywork. Be a part of a team to meet new friends, build confidence, and promote your self esteem. Twirlers will join the Twirlettes in the Saline Homecoming parade on October 11. Instructor: Susan Usher

ID	GRADE	DAY	TIME	DATE	LOCATION	FEE
6016-F24A	K-4	Tu	6:15-7 pm	9/24-10/15	WM Gym	\$109





# Youth Recreation

## MS Field Hockey

The Saline Middle School Field Hockey program welcomes girls in grades 6-8. Middle school field hockey is for those interested in playing in high school or who simply want to learn about this great sport in a fun, competitive team atmosphere. Players will learn technical and tactical skills, game strategy, game rules, and how to play as a cohesive unit. Practices vary in days of the week but will be held Mondays-Thursdays. Games are typically played on weekdays and there is one annual Saturday tournament.

ID	GRADE	DAY	TIME	DATE	LOCATION	FEE
6042-F24A	6-8	M-Th	Varies	9/4-10/25	Varies	\$200



## Fall Youth Field Hockey League

Join us for a FUN fall field hockey league for grades 4-6! The season will run 7-9 weeks, depending on the game schedule given. Games will start on Sunday, September 8th. Practices for the season will begin Wednesday, August 28th. The team will practice one night a week for 1 hour at the Liberty School gym on Wednesdays, 7-8 pm. Games are scheduled on some Saturdays from 9 am to 4 pm, and Sundays from 12pm to 6pm, at Ann Arbor-area schools. Sundays are used in the fall due to Michigan football scheduling. You will receive a schedule of games and locations at a later date. Game schedule TBD.

\*6th graders are welcome to join this league if they are not interested in playing on the Middle School Field Hockey Team.

\*We are looking for one or two parent volunteers to coach this team!

\*Game shirts provided!! Space is limited!! Players must wear shin guards under their socks. Shorts, athletic shoes, and socks are standard team uniforms.

ID	GRADE	DAY	TIME	DATE	LOCATION	FEE
6026-F24A	4-6	W	7-8 pm	8/28-10/25	LB Gym	\$125

ELEVENTH ANNUAL  
**RunTough®**  
for ChadTough Defeat DIPG 5K & 1M

NOW ON  
**SUNDAY**  
AFTERNOON

**September 29, 2024**  
**Saline High School Stadium**

**5 & Under FREE!**



**An Afternoon of Family Fun!**

**Kids Games • Tot Sprint • Meet Mascot "Sting" • ...and more!**



**Help defeat DIPG,  
the deadliest form  
of childhood brain  
cancer.**



**ChadTough**  
Defeat DIPG Foundation  
[chadtough.org/runtough](http://chadtough.org/runtough)



# Facilities Rentals



The use of district facilities beyond school hours is a powerful tool for community growth. Our facilities can be rented at an hourly rate plus charges to cover staff time and supplies. Some of the most popular facilities include auditoriums, gymnasiums, and numerous classrooms and large meeting rooms. Community Education coordinates and supervises the use of school facilities.

Find more information at [www.salinecommunityed.com](http://www.salinecommunityed.com)



## Organizations Who Have Booked Our Facilities

Ann Arbor Red Cross  
Ann Arbor Dance Classics  
Ann Arbor Model Railroad Club  
Camp Gan Israel  
Central City Dance  
Chad Tough  
Champion Driving School  
Champions Circle  
Common Bond Basketball  
Dance Alliance  
Dance Steps Studio  
Dementia Friendly Saline  
EMU Swim & Dive  
FAAST Sports  
Fer De Lance Field Hockey Club  
Fitter and Faster Swim Tour  
Flexwork Sports Youth Professional  
Camps  
Girls on the Run  
Gym America  
Hawai'i University Football  
UM Water Polo  
USC Water Polo





# Saline Area Senior Center



## A SOCIAL CENTER FOR THOSE 45+!

### SASC Membership

\$10 Over 80  
\$15 SAS Resident 50-79  
\$25 Non-Resident 50-79  
\$35 SAS Resident SIT 45-49  
\$45 Non-Resident SIT 45-49

SAS - Lives in Saline School District  
SIT - Senior-in-Training

As a member, you can take advantage of many free programs including cards/games, lifelong learning presentations, and clubs/social groups. Non-members are welcome for \$5 extra per paid program. The membership runs the calendar year, Jan 1-Dec 31, but you can join at any time.

### Fitness Room Membership

Training Fee: \$10  
12 Month Membership: \$96 annually  
Month to Month: \$12 per month

The fitness room includes: two NuSteps, a Matrix Treadmill and Elliptical, Concept 2 Rowing Machine, LifeCORE Recumbent Bike, hand weights, kettlebells, and a stretching table. To utilize the fitness room, you must be a member of SASC and then purchase a separate fitness membership. The membership is 12 months from the day you sign up.

### Some Current Offerings

Acrylics  
Balance Strong  
Cardio Drumming  
Cards/Games/Bingo  
Ceramics  
Chair Zumba  
Clubs/Social Groups  
Fit for Life  
Health & Wellness  
Intergenerational Programming  
Lifelong Learning  
Meals on Wheels  
Meditation  
Pickleball, Ping Pong  
Tai Chi  
Guitar, Recorder, & Ukulele  
Watercolors  
Yoga (Chair & Hatha)  
Zumba Gold

View our newsletter at [salineseniors.org](http://salineseniors.org) for complete program offerings.

### Upcoming Events

Howl-O-Ween Pet Photoshoot: Sep 23  
50/50 Raffle Fundraiser: Oct 1 - Dec 18  
Health Fair: Oct 4  
Veterans Day: Nov, TBA  
Bag & Jewelry Sale: Nov 16



Member Sue Kelch is very involved with many programs at SASC. She created and leads the Silver Shutterbugs, and is on our Board of Directors.

### 50/50 Raffle Fundraiser

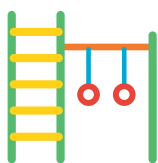
Funds raised from this raffle go towards scholarships for SASC members in need. The drawing will be held Dec 18, winners need not be present. The winner will receive 50% of the funds we bring in, minus expenses. Tickets are \$2 each. Runners-up receive \$25 gift cards to local businesses. Tickets can be purchased at SASC or at [salineseniors.org](http://salineseniors.org), beginning Oct 1.

**Saline Area Senior Center - We are not your Grandma's Senior Center!**  
7190 N. Maple Rd. | 734.429.9274 | [salineseniors.org](http://salineseniors.org) | [facebook.com/salineseniors](https://facebook.com/salineseniors)

# Pooh Corner Preschool



## Open Enrollment for the 2024-2025 School Year is Open!



- Professional and experienced teaching staff
- Nurturing and supportive learning environment
- Research-based curriculum
- Developing early literacy and math concepts
- Fostering emotional and social competencies
- Twice-a-year parents and teacher conferences



### Program Choices

Busy Bee M-F 9:00 am-1:00 pm\*  
Adventure MWF 9:00 am-1:00 pm  
Adventure TuTh 9:00 am-12:00 pm

### Location

Liberty School  
7265 N Ann Arbor St, Saline MI 48176

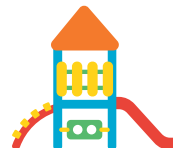
### Eligibility

Ages 3-5 years

\*Children in the Busy Bee room must  
be 4 by December 1st

### More Information

For more registration or enrollment  
information, please call the office at  
734-401-4063. Check out the Pooh  
Corner website below!



Register by calling 734-401-4063  
or email [turcks@salineschools.org](mailto:turcks@salineschools.org)

Check out the Pooh Corner Website:

<http://www.salineschools.org/extracurriculars/saline-community-education/pooh-corner/>



# Pooh Corner Preschool



## Great Start Readiness Program



The Great Start Readiness Program (GSRP), is a program for children 4 years of age and families that meet the income guidelines set by the Michigan Department of Education. The purpose of GSRP is to ensure each child in Michigan is ready to enter into a kindergarten program.

- Professional and experienced teaching staff
- Nurturing and supportive learning environment
- Research-based curriculum
- Developing early literacy and math concepts
- Fostering emotional and social competencies
- Twice-a-year parents and teacher conferences



Funding provided by the Michigan Department of Education



**Program Hours**  
M-Th 9:00 am-3:30 pm

**Location**  
Liberty School  
7265 N Ann Arbor St, Saline MI 48176

**Eligibility**  
Children must be 4 years old by December 1st of the enrollment year

**More Information**  
For more registration or enrollment information, please call the office at 734-401-4063. Check out the Pooh Corner website below!

<http://www.salineschools.org/extracurriculars/saline-community-education/pooh-corner/>



# Before & After School Care



## **School Year 2024-2025: Registration is currently open! Enrollment is full on some morning and afternoons.**

- Students ages 5-5th grade: Come play cards and board games, build with blocks, craft, play games in the gym, and more.
- Before school care runs 6:45 am-start of the school day. After school care runs from the end of the school day until 6:00 pm. Programs take place at each elementary building and Heritage.
- Consistent weekly schedule will be required for the school year. Register for as little as one morning or afternoon per week.
- Morning and afternoon snack and drink are included.
- Enrollment fee is \$55 per family. School year 2024-2025 daily rates are \$11 per morning, \$13 per afternoon



**For more information, visit [salinecommunityed.com](https://salinecommunityed.com) and click on the Child Care Services tab, or call 734-401-4031 or 734-401-4028.**

**Register online at [salineonline.reg.eleyo.com](https://salineonline.reg.eleyo.com)!**



# Registration Information

**Online Registration:** [salineonline.reg.eleyo.com](https://salineonline.reg.eleyo.com)

**School Year Office Hours:** Monday-Friday, 8 am-4 pm

**Summer Office Hours:** Monday-Friday, 7:30 am-3:30 pm (closed 12-1 pm for lunch)

## Refund Policy

Full refunds are made when we cancel a class due to low enrollment or circumstances beyond our control.

- No refunds will be given after the conclusion of a class or program.
- If you cancel a class before the class begins: \$5 cancellation fee charged for classes \$50 and under, 10% cancellation fee charged for classes over \$50 (per enrollee/student).
- If you cancel a class after the class has started your refund will reflect the cancellation fee and the refund will be prorated for classes held regardless of attendance.

## Quick & Easy Ways To Register

Preregistration is required for all programs. Register and pay using Visa/Discover/MasterCard/American Express/Cash/Check. Fees are payable in full at the time of registration.

- Online: [salineonline.reg.eleyo.com](https://salineonline.reg.eleyo.com) and search for the class title.
  - In Person: Liberty School, 7265 N Ann Arbor Street, Saline MI 48176
  - Phone: 734-401-4020, during office hours
- Register Early: The most common reason for class cancellation is low enrollment.

Returned Checks: Processed by Check Redi - See page 2.

Waitlist: Registrants will be placed on a waitlist if the class has reached its maximum enrollment. Do not attend the class unless our office contacts you.

**We reserve the right to revoke offers, correct errors, change prices, and make policy changes at any time.**

## Discounted Programs & Classes

Students who are approved to receive Free or Reduced Lunch through the Saline Food Service Department are eligible to receive 15% off Community Education Programs and classes. Please call 734-401-4020 to request your discount and to register for classes. Because classes must be financially self-supported through fees, you may be asked to pay up to the full rate under some circumstances.

## Student Assistance Policy

Saline Community Education follows guidelines set forth in the Extracurricular Handbook, which can be found at [salineschools.org](https://salineschools.org) under Extracurriculars.

## Class Arrival and Departure

Please note the scheduled time of the activity so that children can be dropped off and picked up promptly. Supervision is not available beyond the scheduled times of the activity. Please be timely in dropping off and picking up children.

## Participants with Special Needs

Saline Community Education will provide reasonable accommodations for participants with special needs. To maximize the participant's success in our programs, we ask that at the time of registration, or before that, you please communicate the nature of the participant's needs with our department. Please call 734-401-4020 to register for our programs. We will do our best to have participants start our programs on time, but the start day may be delayed in order to make sure accommodations are in place.

I'd like to take a class on a topic that I don't see offered

I'd like to teach a new class on something I'm passionate about

## Ideas or suggestions?

**Are you finding the classes you're looking for?  
Is there a class or program you'd like to see offered?  
Would you like to share a skill or talent with our community by teaching a class?  
We want to hear from you!**

**Please contact Brian Puffer at  
[pufferb@salineschools.org](mailto:pufferb@salineschools.org)  
with your suggestion!**

Saline Area Schools  
7265 North Ann Arbor Street  
Saline, MI 48176

ECRWSS  
POSTAL PATRON

Non-Profit  
U.S. Postage  
PAID  
Permit No. 24  
Saline, MI 48176

# Saline November Craft Show

Saturday, November 9, 2024

8 am-3:30 pm

Admission - \$5 - cash only

Saline Middle School



*Come meet our passionate crafters!*



Saline Community Education



@SalineCommEd



@salinecommunityed

Saline Community Education - [salineonline.reg.eleyo.com](https://salineonline.reg.eleyo.com)

734-401-4020