



ESSER III FUNDING COMMUNITY CONVERSATION

SALINE AREA SCHOOLS | JANUARY 2022



AGENDA

ESSER III FUNDING COMMUNITY CONVERSATION

- ❖ WELCOME
- ❖ PRESENTATION
- ❖ SHORT Q&A OPPORTUNITY
- ❖ BREAKOUT ROOMS
- ❖ LARGE GROUP SHARE OUT
- ❖ NEXT STEPS



Who's In the Room?

ESSER III FUNDING COMMUNITY CONVERSATION



Go to www.menti.com

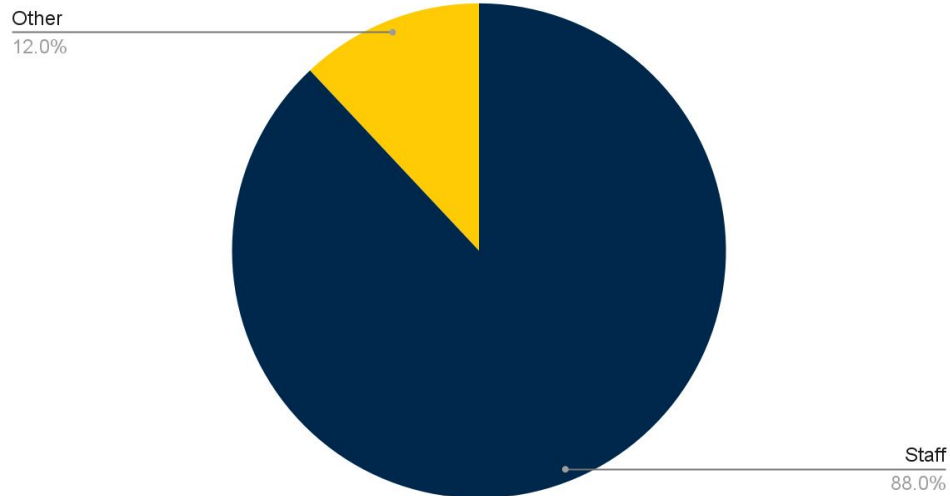
Enter code: 7353 6779



SAS BUDGET OVERVIEW

ESSER III FUNDING COMMUNITY CONVERSATION

Saline Area Schools Budget



TOTAL: \$62 MILLION

88% SALARY + BENEFITS





WHAT IS ESSER?

ESSER III FUNDING COMMUNITY CONVERSATION

ELEMENTARY AND SECONDARY SCHOOL EMERGENCY RELIEF FUND

Federal money allocated to public educational institutions to provide support throughout the COVID-19 pandemic.



FUNDING AMOUNT

ESSER III FUNDING COMMUNITY CONVERSATION

HOW MUCH MONEY FOR SAS?

ESSER I: \$76,755 (FINALIZED JUNE 2020)

ESSER II: \$369,599

ESSER III: \$830,656

TOTAL (II + III) = \$1,200,255





FUNDING TIMELINE

ESSER III FUNDING COMMUNITY CONVERSATION

MARCH
2020

2022-
2023

WHEN CAN THE FUNDS BE USED?

Funding can be applied to previous eligible expenses from the start of the COVID-19 pandemic (March, 2020) through the end of next school year (2022-2023)



FUNDING STIPULATIONS

ESSER III FUNDING COMMUNITY CONVERSATION



**20% =
\$166,131.20**

WHAT IS THE 20% REQUIREMENT?

ESSER III funding requires schools to spend 20% of the allotment on student learning loss from the COVID-19 pandemic.

LEARNING LOSS DEFINED

“The (school district) must reserve at least 20% of funds to address learning loss through the implementation of evidence-based interventions and ensure they respond to students’ social, emotional, and academic needs and address the disproportionate impact on underrepresented student subgroups.” - *Michigan Dept. of Education*



CURRENT IMPLEMENTATION

ESSER III FUNDING COMMUNITY CONVERSATION

◆ RETAINED STAFF
(THOUGH LESS STUDENTS)

◆ INCREASED LITERACY
TUTORS, BEHAVIORISTS

◆ INCREASED SCOPE OF
SUMMER SCHOOL



◆ CLEANING SUPPLIES,
MASKS, TESTING

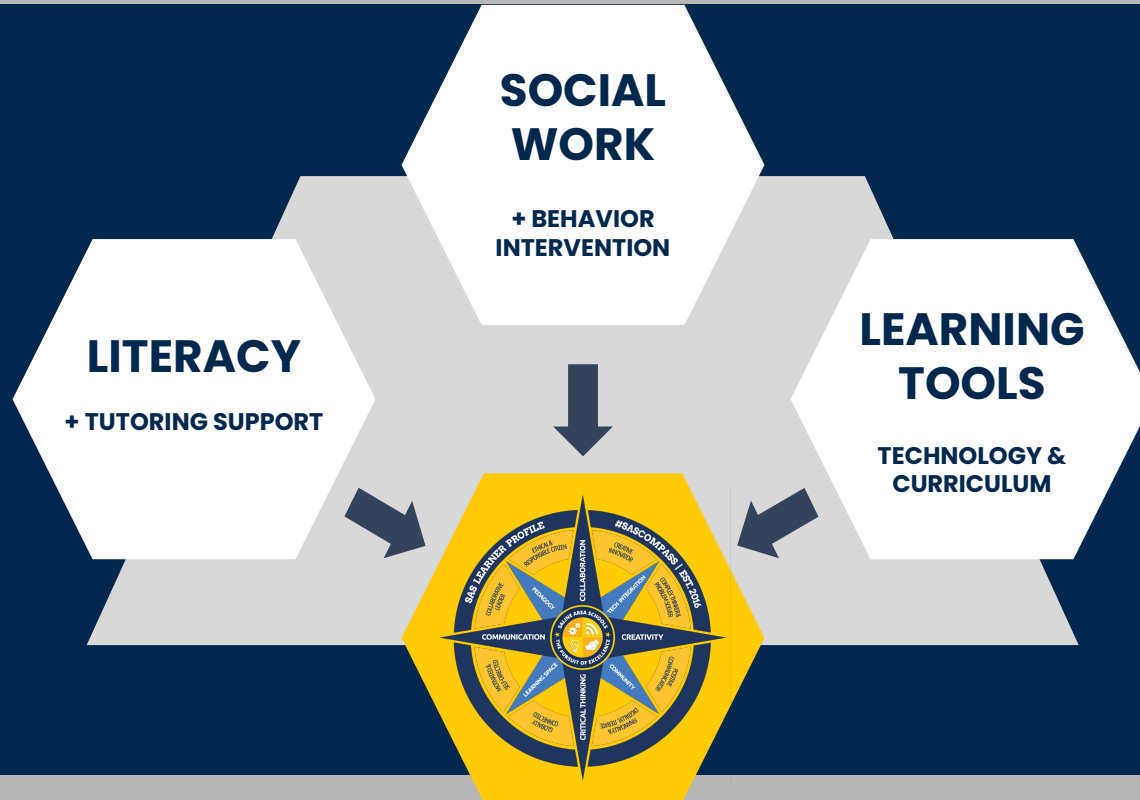
◆ SIGNAGE, PLEXIGLASS,
TENT RENTALS

◆ LINCOLN LEARNING, WIFI
ACCESS



SPENDING EXAMPLES

ESSER III FUNDING COMMUNITY CONVERSATION





PREVIOUS FEEDBACK

ESSER III FUNDING COMMUNITY CONVERSATION





Prioritizing Allowable Categories

ESSER III FUNDING COMMUNITY CONVERSATION



Go to [www. Menti.com](https://www.menti.com)

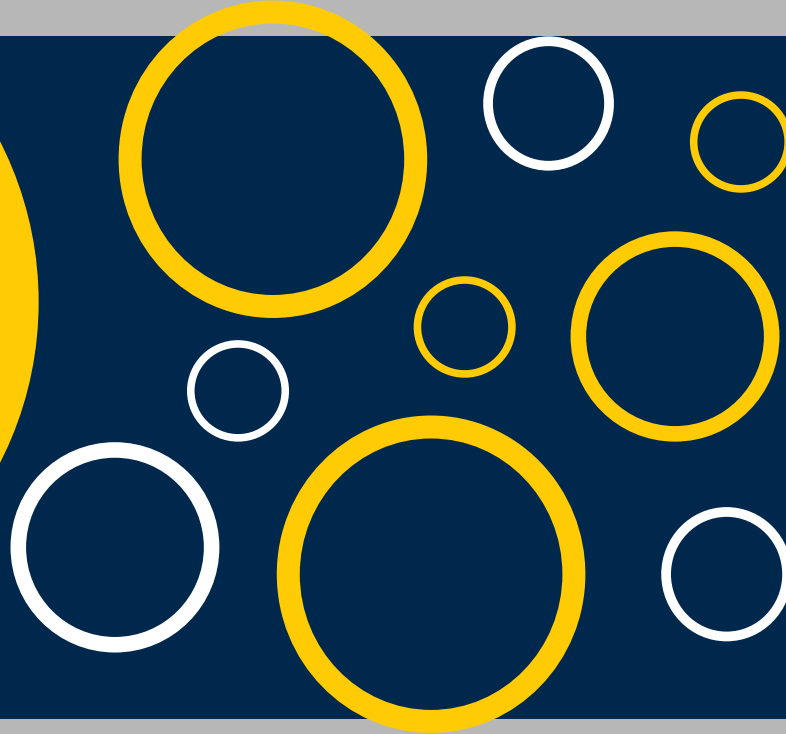
Enter code: 7353 6779



SMALL GROUP WORK

ESSER III FUNDING COMMUNITY CONVERSATION

ONE COMMUNITY MEMBER
SUGGESTED PARTNERING
WITH A LOCAL ENTITY
SUCH AS GREAT LAKES
EDUCATIONAL GROUP TO
PROVIDE TUTORING FOR
LEARNING LOSS





Think Time

ESSER III FUNDING COMMUNITY CONVERSATION

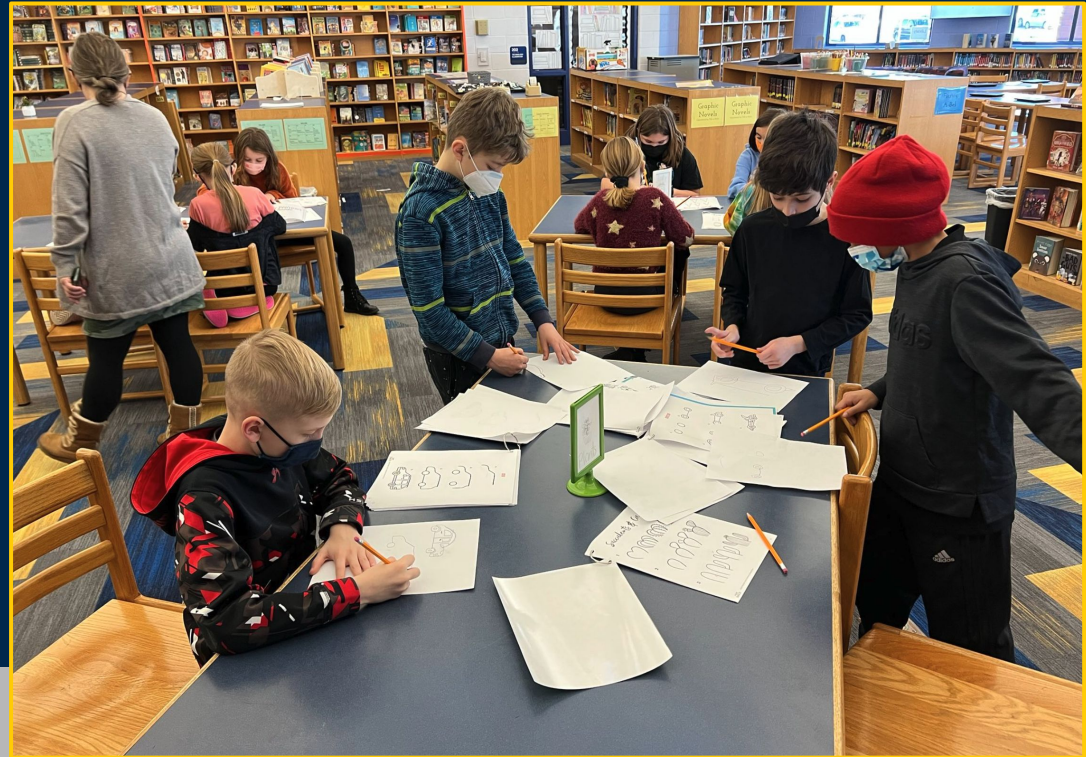
Strategic Goal Area	Related Allowable Uses
Ideas related to academic, professional, and life skills for current and future success:	<ul style="list-style-type: none"> • Addressing unique needs of children in minority groups (low income, EL, disability, etc) • Planning and implementing activities related to summer learning and supplemental afterschool • Addressing learning loss among students • Continuing to employ an existing staff/hiring new to maintain quality of services
Ideas related to strengthening family, community and school relationships:	<ul style="list-style-type: none"> • Providing mental health services and supports • Developing strategies and implementing public health protocols
Ideas related to social emotional wellness/mental health:	<ul style="list-style-type: none"> • Providing mental health services and supports • Addressing unique needs of children in minority groups (low income, EL, disability, etc) • Continuing to employ an existing staff/hiring new to maintain quality of services
Ideas related to finance/operations:	<ul style="list-style-type: none"> • Coordination/development of Covid preparedness and response • Purchasing supplies to sanitize and clean the facilities; related training • Planning for/coordinating long-term closures needs (providing meals/tech, etc) • Purchasing educational technology (including hardware, connectivity, assistive tech, adaptive tech) • Addressing facility repairs/improvements to reduce risk of virus transmission • Upgrade projects to improve the indoor air quality





LARGE GROUP SHARE OUT

ESSER III FUNDING COMMUNITY CONVERSATION





QUESTIONS?

ESSER III FUNDING COMMUNITY CONVERSATION





CLOSING

ESSER III FUNDING COMMUNITY CONVERSATION

THANK YOU + NEXT STEPS

